



The Global Leader In Vacuum Lifting Technology

Since 1999, Vacuworx has been engineering and manufacturing the highest quality heavy-duty lifting equipment for the oil and gas, water and sewer, highway and heavy construction, concrete construction, precast concrete, landscaping and manufacturing industries.

Benefits

- Wireless remote operation is safer than hooks, slings or chains
- Faster load and unload cycles mean less downtime for your workers
- 360° rotation provides precise placement of materials
- Need for fewer employees translates to lower payroll and insurance costs
- Will not damage delicate materials and bonded coatings
- Eliminates the need for costly cribbing or spacers for pipe and plate
- Quick-couplers are available for attachment versatility
- Optimal performance in cold and inclement weather conditions
- Full inventory available for immediate purchase or rental
- Parts, service and technical support available 24/7/365 for installation, training, repairs and troubleshooting

Applications

Vacuworx Lifting Systems can be customized for many applications and lift capacities. Standard models lift a variety of materials including:

- | | |
|---|---|
| → Steel pipe, including most types of coating (tape, FBE, coal tar, concrete, etc.) | → Saw cut concrete (demolition or rehabilitation) |
| → Plastic pipe (PVC, fiberglass, long flexible pipe) | → Sidewalk repair |
| → Ductile iron pipe | → Landscape pavers |
| → Concrete pipe | → Steel plate and piling |
| → Precast concrete slabs and culverts | → Road plate |
| | → Access Mats |

Host Equipment

Vacuworx lifters can be attached to hydraulic excavators and backhoes with or without a coupler system, wheel or track type loaders, cranes, pipe layers, skid steers, forklifts, and knuckle booms. These lifters can also be adapted for various in-plant applications through mounting.

COMPACT



PS/PHD Series

Vacuworx Portable Vacuum Lifting Systems offer the perfect solution for smaller lifting challenges on the job or in the shop. Designed for both interior and exterior applications, these battery powered lifters can go to work anywhere! The PS 1 can lift up to 1,700 lb (0.8 tonne), while the PHD features a twin pump design, remote control and a lift capacity of 2,500 lb (1.13 tonne).



SL Series

The SL 2 Subcompact Vacuum Lifting System is the ultimate attachment. Featuring all-aluminum construction, the lifter runs off the host machine's hydraulic system and can be easily attached to any skid steer to lift up to 4,400 lb (2 tonne). Quick-connect hoses make switching between attachments fast and easy.



CM Series

The CM 3 Compact Modular Vacuum Lifting System is easily adaptable to multiple applications and host machines. Featuring rugged all-steel construction to handle materials up to 6,600 lb (3 tonne), the CM 3 can accommodate single or double pad configurations to lift a variety of material weights and sizes.

MID RANGE



MC Series

The MC 3 and MC 5 are lightweight vacuum lifters with lift capacities from 6,600 to 11,000 lb (3-5 tonne). The MC 3 operates using a self-contained gas engine. The MC 5 has the same compact profile with a higher capacity diesel engine. The MC 5H is powered by the hydraulic system of the host machine.

HEAVY DUTY



RC Series

RC Series lifters are designed to handle materials from 22,000 to 55,000 lb (10-25 tonne). Fully self-contained units are powered by diesel engines and can be hooked up and ready to go in a matter of minutes. Hydraulic "H" models operate using the hydraulic system of the host machine to eliminate fuel costs, emissions and noise.

SPECIALTY



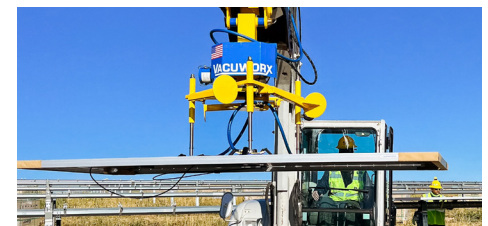
CC-TT

The CC-TT Lifting System offers an alternative to using anchors and chains when handling precast concrete, and eliminates the need for personnel to climb on stacks. This lifter features a multi-function computer operated remote control system with touch screen and a lift capacity of 77,000 lbs (35 tonne).



V Series

The V SERIES vacuum lifting systems are fully electric, modular, and can lift materials ranging from 640 - 3,528 lbs (290 -1600 kg). VT/VRT systems can tilt up to 90°, while the VRT can also rotate 360°. The VPL offers standard pad configurations of 2-8 pads, with easily adjustable pad arms to work with a variety of material sizes.



SPL

The SPL system allows easy installation and manipulation of solar panel modules in field via attachment to a variety of mini excavators. This system reduces worker fatigue, increases worker safety, and gently handles solar panels. The SPL features a 300 lb (136 kg) lift capacity.